

PART OF THE EAST 1/2 OF SECTION 17, T.6N., R.2W., S.L.B. & M.
GIBSON RANCHETTES SUBDIVISION NO. 3

185

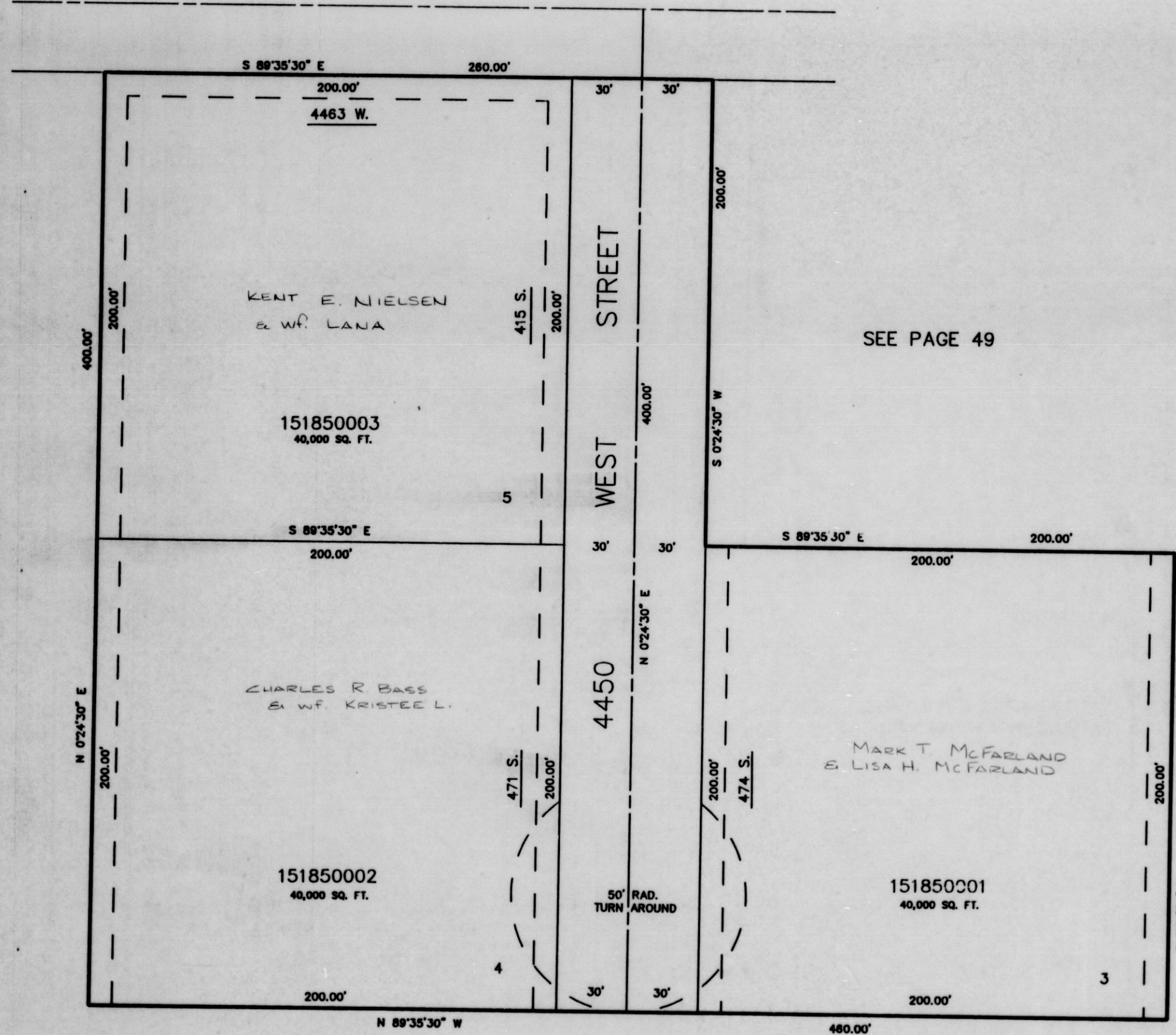
TAXING UNIT: 53

IN WEBER COUNTY
SCALE 1" = 40'

SEE PAGE 49

400 SOUTH STREET

SEE PAGE 49



SEE PAGE 48-1

10' UTILITY & DRAINAGE EASEMENTS EACH
SIDE OF PROPERTY LINES AS INDICATED
BY DASHED LINES EXCEPT AS OTHERWISE
SHOWN.

FOR COMPLETE ENO DATA SEE
ORIGINAL DEDICATION PLAT IN
BOOK 34, PAGE 16 OF RECORDS.